

**ARKANSAS TSA**  
**SPRING CONFERENCE**  
**AND**  
**STATE COMPETITION**

**2023**



# BINGO!

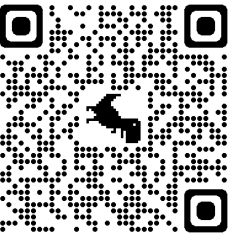
Welcome to the 2023 Arkansas Technology Student Association Spring Conference and State Competition! I know everyone has worked hard to get here, including student members, chapter advisors, school administrators, and sponsors. For the first time, the ARTSA Spring Conference includes breakout sessions for students to attend while not competing, and as an incentive to actively participate in all that we have to offer, you'll find a BINGO card inserted into this program. Each session and competition has a stamp, and the first person to get a full row, column, or diagonal will win a \$10 Visa Gift Card. The first person to get a "blackout" will be recognized at the Award Ceremony with a \$25 Visa Gift Card. Once you complete your card, bring it back to the check-in table in the cafeteria. A Remind message will be sent out when we have a winner for each. I hope that each of you takes the initiative to get the most out of this conference as you can so that you, too, can leave your Legacy of Innovation on ARTSA!



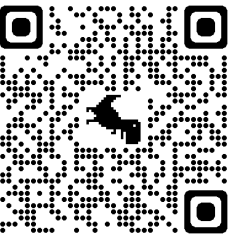
Allison Carter, TSA State Advisor

## Conference Updates

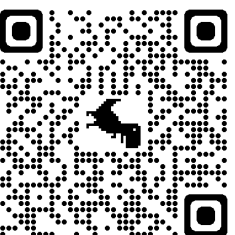
Last Names A-G



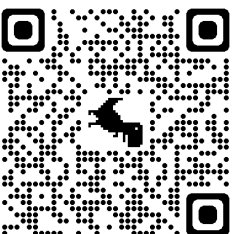
Last Names H-Q



Last Names R-Z



[remind.com/join/tsaag](https://remind.com/join/tsaag)   [remind.com/join/tsahq](https://remind.com/join/tsahq)   [remind.com/join/tsarz](https://remind.com/join/tsarz)



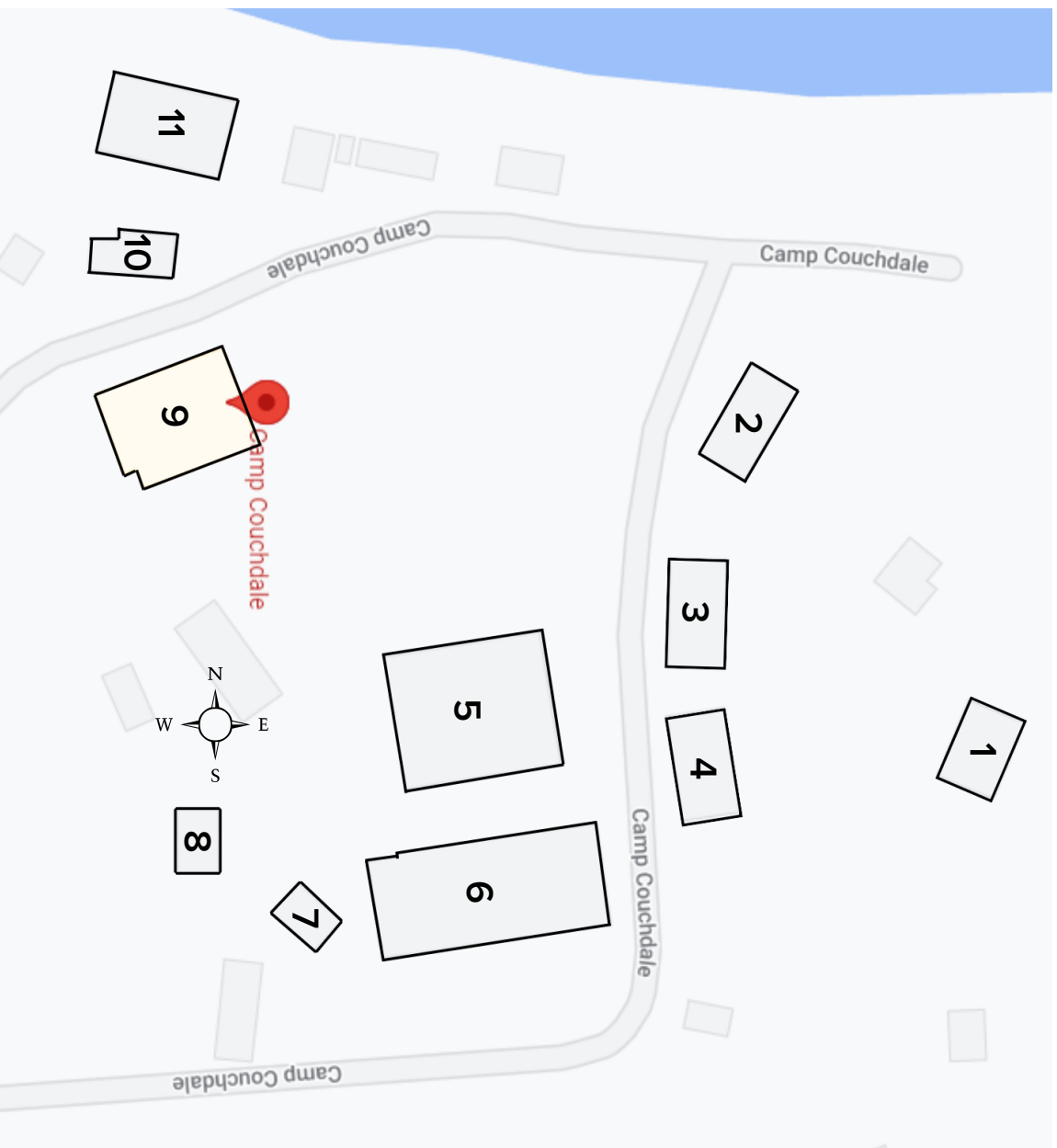
Overflow  
(use if the others are full!)

[remind.com/join/tsaover](https://remind.com/join/tsaover)

# Table of Contents

Camp Couchdale Map .....	3
Monday Competition Schedule .....	4
Monday Breakout Schedule .....	5
Tuesday Full Schedule .....	6
Other Activities .....	7
Social Media .....	7
2023 State Officers .....	8
List of Judges .....	9
Our Sponsors .....	10

# Camp Couchdale



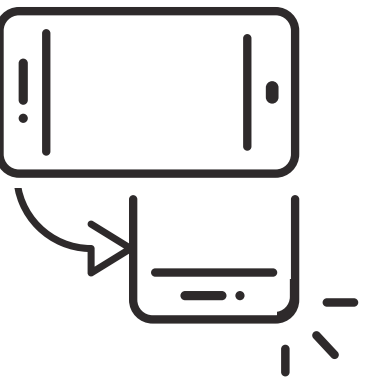
- |                                     |                     |
|-------------------------------------|---------------------|
| 1- Justus Center                    | 7- Cabins 21 and 22 |
| 2- Greenhand Lodge                  | 8- Cabins 23 and 24 |
| 3- Cabe Lodge                       | 9- Cafeteria        |
| 4- AR Lodge & Foyer                 | 10- Cantina         |
| 5- Pavillion                        | 11- Chapter House   |
| 6- Fletcher Leadership Center (FLC) |                     |

# Monday Competitions

Time	Event	Location
8:00-9:00	Check-In	Cafeteria
9:15-10:15	Opening Session	Chapter House
	CAD Architecture (semifinal round)	FLC Office
10:30-12:30	Digital Video Production	Cabin 22
	Dragster Design	Chapter House
	Fashion Design and Technology	FLC Auditorium
	Prepared Presentation	FLC Room 1
	VEX Skills Rounds	Justus Center
12:00-1:00	Lunch	Cafeteria
1:00-5:30	VEX Robotics Tournament	Justus Center
1:15 - 5:00	Tech Bowl	FLC Auditorium
	Animatronics	FLC Foyer
	Architectural Design	FLC Foyer
	Audio Podcasting	FLC Office
	Board Game Design Group A	Chapter House
	Debate	Cabin 23
	Technology Problem Solving	Chapter House
	Board Game Design Group B	Chapter House
	CAD Engineering	FLC Office
	Children's Stories	FLC Room 1
3:30-5:30	Extemporaneous Speech	Cabin 23
	Music Production	Chapter House
	Video Game Design	Chapter House
5:00-6:00	Dinner	Cafeteria
6:30-10:00	SSBU Tournament	FLC

# Monday Breakout Sessions

Time	Event	Location
10:40-11:10	FBI Evidence Response Team	FLC Rm 2
	Reimagine the Possibilities With IBM Certifications	FLC Rm 4
	Strategies for the AP Biology FRQ, part 1	FLC Rm 3
	Strategies for the AP Chemistry FRQ, part 1	FLC Rm 6
	Strategies for the AP Calculus FRQ, part 1	FLC Rm 5
11:20-11:50	College Survival Tips	AR Foyer
	Dress for Success	Cabin 23
	Teamwork- The Wall	Cafeteria
	Teamwork- King's Fingers	Cafeteria
	FBI Evidence Response Team	FLC Rm 2
1:05-1:35	Learning Blade Suite Introduction	FLC Rm 4
	Strategies for the AP Biology FRQ, part 2	FLC Rm 3
	Strategies for the AP Chemistry FRQ, part 2	FLC Rm 6
	Strategies for the AP Calculus FRQ, part 2	FLC Rm 5
	Q&A with College Professors	AR Foyer
3:05-3:35	Teamwork- The Wall	Cafeteria
	Teamwork- The Whale	Cafeteria
	Careers in IT and Cybersecurity: Interviews	AR Foyer
	Reimagine the Possibilities With IBM Certifications	FLC Rm 4
	Life Skills: Taking Proper Body Measurements	FLC Rm 1
4:25-4:55	Building Momentum - Path to Architecture & Engineering	FLC Rm 6
	Strategies for the AP Language FRQ, part 1	FLC Rm 3
	Path to Cybersecurity	FLC Rm 2
	Psychology and Tech: an Unlikely Duo, pt 2	FLC Rm 5



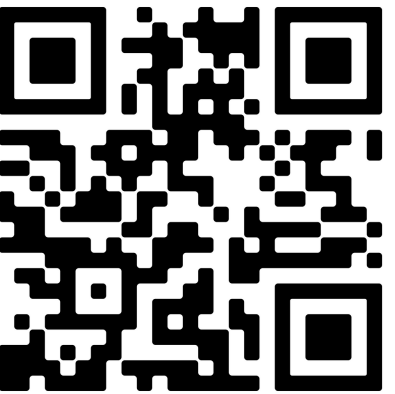
Time	Event	Location
1:45-2:15	Careers in IT and Cybersecurity: Interviews	AR Foyer
	Reimagine the Possibilities With IBM Certifications	FLC Rm 4
	Fashion Design: Basic Fashion Sketching	FLC Rm 1
	Building Momentum - Path to Interior Design	FLC Rm 6
	Strategies for the AP Language FRQ, part 2	FLC Rm 3
	Path to Cybersecurity	FLC Rm 2
2:25-2:55	Psychology and Tech: an Unlikely Duo, pt 1	FLC Rm 5
	Teamwork- The Wall	Cafeteria
	Teamwork- King's Fingers	Cafeteria
	Strategies for the AP Biology FRQ, part 1	FLC Rm 3
	Into the Quantum World: A Workshop on Quantum Computing	BYOD
	Fashion Design: Textile and Fabric Selection	FLC Rm 1
3:45-4:15	How to Get Hired!	FLC Rm 2
	Nature Photography in Photoshop	FLC Rm 6
	Strategies for the AP Biology FRQ, part 2	FLC Rm 3
	Into the Quantum World: A Workshop on Quantum Computing	BYOD
	Leadership and Campaigning for State Office	FLC Rm 2
	Dance Dance Innovation	AR Foyer
3:05-3:35	Nature Photography in Photoshop	FLC Rm 6
	Teamwork- The Wall	Cafeteria
	Teamwork- The Whale	Cafeteria
	Careers in IT and Cybersecurity: Certifications	FLC Rm 2
	Strategies for the AP Calculus FRQ, part 1	FLC Rm 5
	Strategies for the AP Chemistry FRQ, part 1	FLC Rm 6
4:25-4:55	Strategies for the AP Language FRQ, part 1	FLC Rm 3
	How to Gain a Competitive Edge	FLC Rm 4
	Dance Dance Innovation	AR Foyer
	Teamwork- The Wall	Cafeteria
	Teambuilding- The Whale	Cafeteria
	Careers in IT and Cybersecurity: Certifications	FLC Rm 2
4:25-4:55	Strategies for the AP Calculus FRQ, part 2	FLC Rm 5
	Strategies for the AP Chemistry FRQ, part 2	FLC Rm 6
	Strategies for the AP Language FRQ, part 2	FLC Rm 3
	How to Gain a Competitive Edge	FLC Rm 4
	Teamwork- The Wall	Cafeteria
	Teamwork- King's Fingers	Cafeteria

# Tuesday Full Schedule

Time	Event	Location
7:30 - 8:30	Breakfast (for overnight guests only)	Cafeteria
8:30 - 10:30	College and Career Fair	FLC Auditorium
	Biotechnology Design	FLC Room 6
	Engineering Design	FLC Room 3
	Forensic Science (Semifinal)	FLC Room 2
	Geospatial Technology	FLC Room 4
	Photographic Technology	FLC Room 1
10:40 - 11:20	Transportation Modeling	FLC Room 5
	Officer Candidate Speeches and Election	Chapter House
	Lunch	Cafeteria
12:00 - 1:00		
1:00 - 2:30	Closing Ceremony	Chapter House
2:30 - 3:00	Sponsors Meet and Greet	FLC

## Social Media

**FOLLOW US!**



<https://qrco.de/bdl1882>

**ARTSA Tags:**

**#foreverTSA**

**#TSAtheARway**

**#legacyofinnovation**

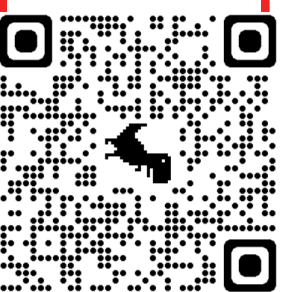
**#TSAprecheck**

**#pieforpi**

# ACS Fundraising

## Photobooth

There are two photobooths on campus- one in the cafeteria and one in the FLC. Feel free to take your own pictures at any time, but sign up for a time slot to get your BINGO card stamped, use props, and have the option to purchase a polaroid photo for \$1. Use the QR code below to sign up.



<https://bit.ly/TSaphoto>

## Concession Stand

Get your snack on at the Cantina! We have water, soda, candy, and chips. Everything is \$1.00. The concession stand will be open Monday from 10:30am-5:00pm. The cantina is building #10 on the map and is between the cafeteria and the Chapter House. It is cash only, and we cannot accept bills larger than \$20.

## Pi Day!

There are jars in the cafeteria with advisors' and State Officers' names on them. Drop in a dollar (or more!) to increase the chances of that person getting "pi'd" in the face! The three jars with the most money by 11:30am on Tuesday will get pi'd at lunch!



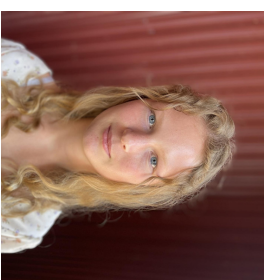
# 2023 State Officers



**Sydney Atha**  
President  
Alma



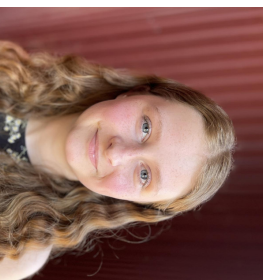
**Tyson Castleberry**  
Vice President  
Alma



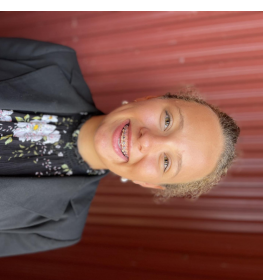
**Nyah Hostler**  
Secretary  
Siloam Springs



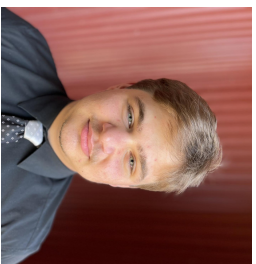
**Isaac Myers**  
Treasurer  
Greenwood



**Riley Posey**  
Reporter  
Greenwood



**Anna Floyd**  
Historian  
Siloam Springs



**Aiden MackKay**  
Sergeant at Arms  
Alma



**Cami Henson**  
Regional Representative  
Van Buren



**Dalton Bishop**  
Regional Representative  
Manila



**John Nevels**  
Regional Representative  
Elkins

# Shoutout to Our Judges!

Amanda Morley, Instructor, Jamileh Kamran Arkansas Fashion School  
Andrew Healey, Director of IT & Cybersecurity, Central States Manufacturing  
Ashley Kincannon, Statewide CS Specialist, CSforAR  
Becky Cunningham, Assistant Professor and CS/IT Program Director, ATU  
Bhaskar Ghosh, Assistant Professor, Arkansas Tech University  
Blake Beckham, Territory Manager, Victaulic, ASHRAE, STEM Coalition Board  
Cheryl Hearne, Director of Cybersecurity Services, Edafio Technology  
Partners

Christopher Svebek , Student , Southwestern Oklahoma State University  
Dr. Michele Linch, State Director , Learning Blade - Ready for Industry  
Grant Brewer, UAS Collegiate Liaison, DroneUP  
Hannah Vogler, Executive Director, The Arkansas STEM Coalition  
James Swann, WER Architects, WER Architects/ Building Momentum  
Jamie Holt, Architect, Building Momentum  
Jamileh Kamran, Owner & Dean, Jamileh Kamran Arkansas Fashion School  
Jayla Gimmich, Security Specialist, Federal Bureau of Investigation  
John Hart, CS Specialist, CSforAR  
John Peterson, Senior Civil Engineer, Cromwell Architects Engineers  
Kim Koch, Insight Engineering / Founding Principal, Building Momentum  
Kimberly M. Forga, Author, Illustrator, Editor, Lost Scribe Publishing, LLC  
LaGanzie Kale, General Manager, KLEK 102.5 F.M.  
Lucas Moody, Undergraduate Program Chair for Cybersecurity , ATU  
Engineering and Computing Science

Melissa Swann, Marketing Director , Edafio  
Michael Denison, Field Researcher II, CoStar Group, CoStar Group  
Nicol Pastran, Intern Architect/Interior Designers , WDD Architects  
Pam Black, Director of CTE, Pulaski County Special School District  
Paul Timko, Cromwell Architects Engineers, Cromwell Architects Engineers  
Randall Eubanks, Machinist , Arkansas Tech University  
Ryan Van Doorn, Mechanical Engineer, Cromwell Architects Engineers  
Sarah Argue, Deputy Director, Arkansas Research Center  
Stacy Reynolds, CS Specialist, Arkansas Department of Education  
Steve Shumaker, Education Sales Consultant, Technical Training Aids  
Tanya Ruble, Science Director, AR AIMS  
Valerie Moring, Director of Consulting Services, Edafio Technology Partners

# Sponsors

## Platinum



## Silver



## Bronze



With Special Thanks to

